



Creation GuidePoint

High Traffic Luxury Vinyl Tile

Gerflor[®]



1013 NUTMEG

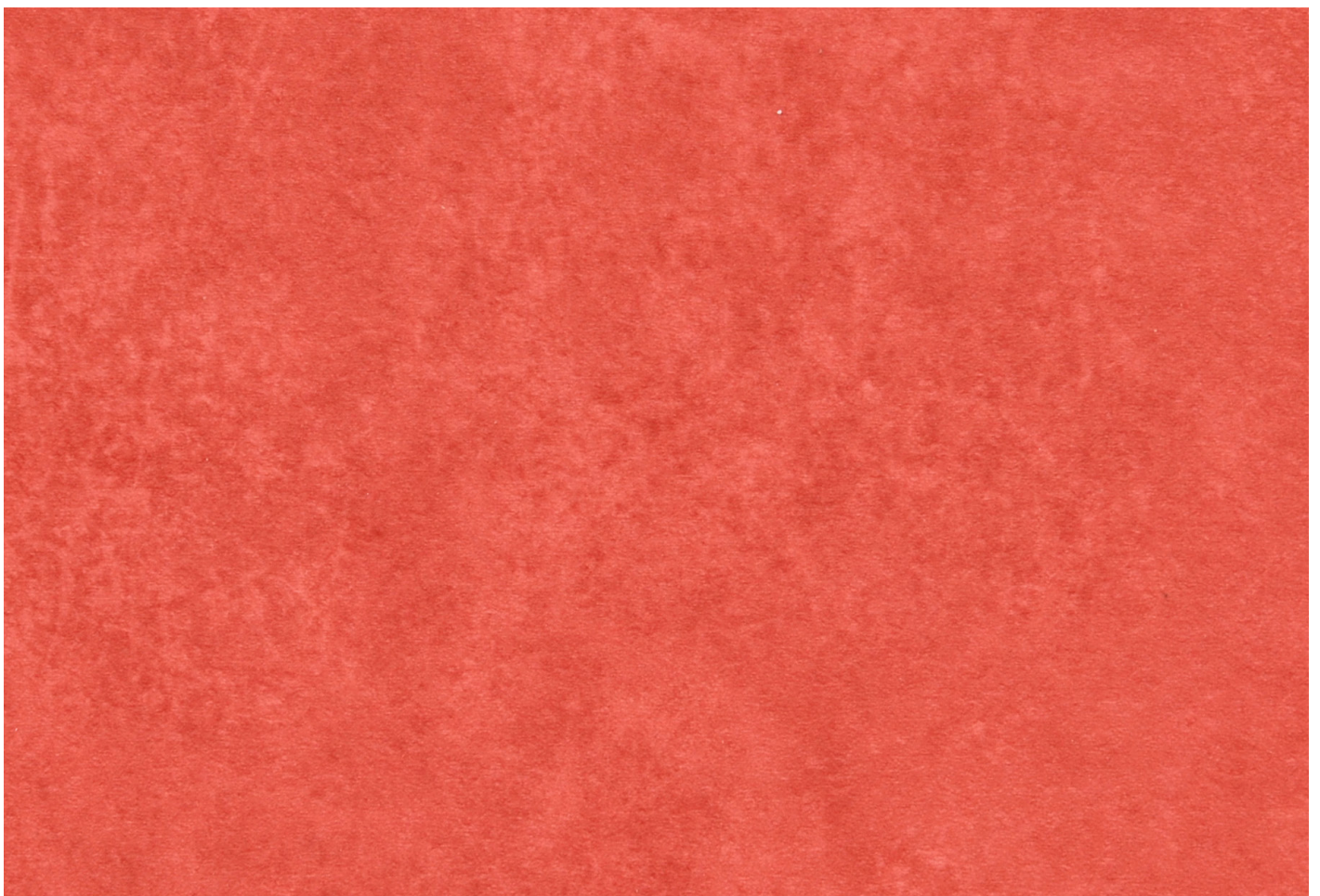
12" x 24"

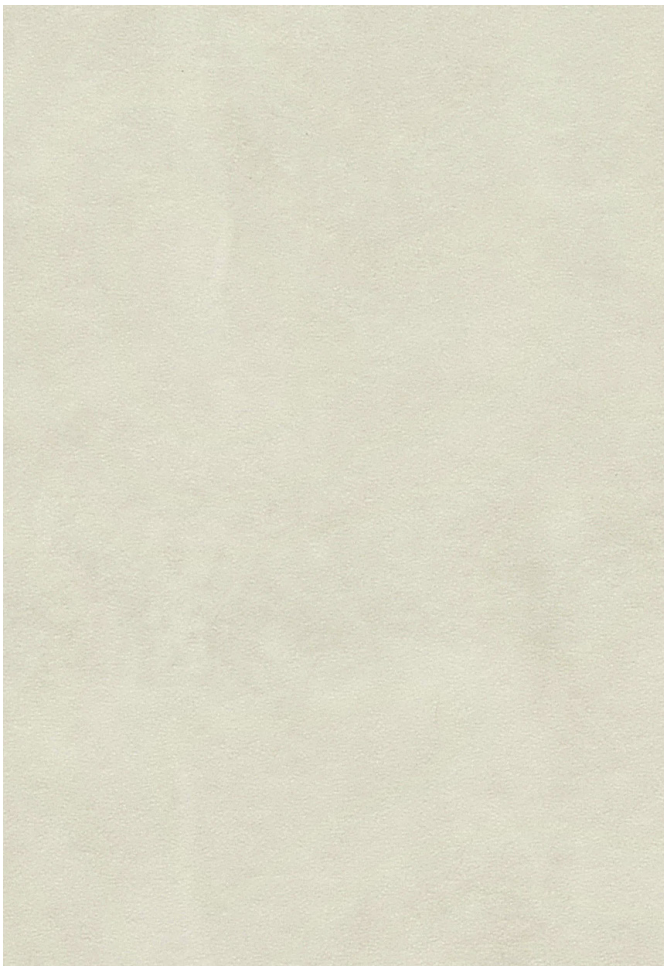
This image: 1001 Saffron and 1013 Nutmeg
Cover: 1004 Sumac, 1008 Toned Thistle and 1016 Clouded Thyme





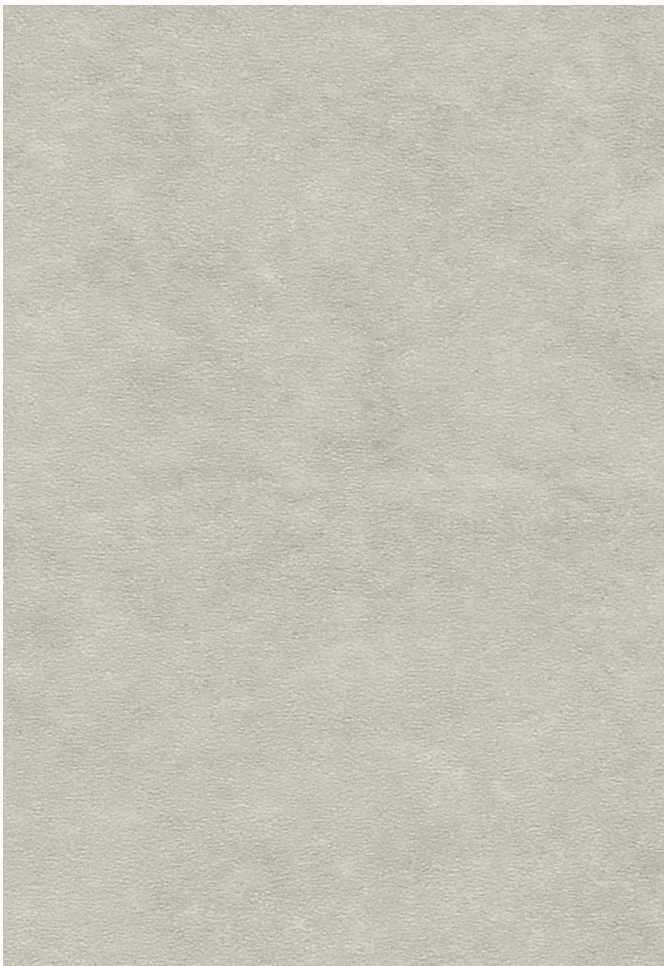
Educational environments are about collaboration, shared learning, and taking bold new steps. So too is Creation GuidePoint, a blended tonal design in a palette of inviting neutrals and modern accents that can pull a space together while creating a distinct identity. Creation GuidePoint's durable construction offers excellent stain, scuff and scratch resistances for easy ongoing maintenance.





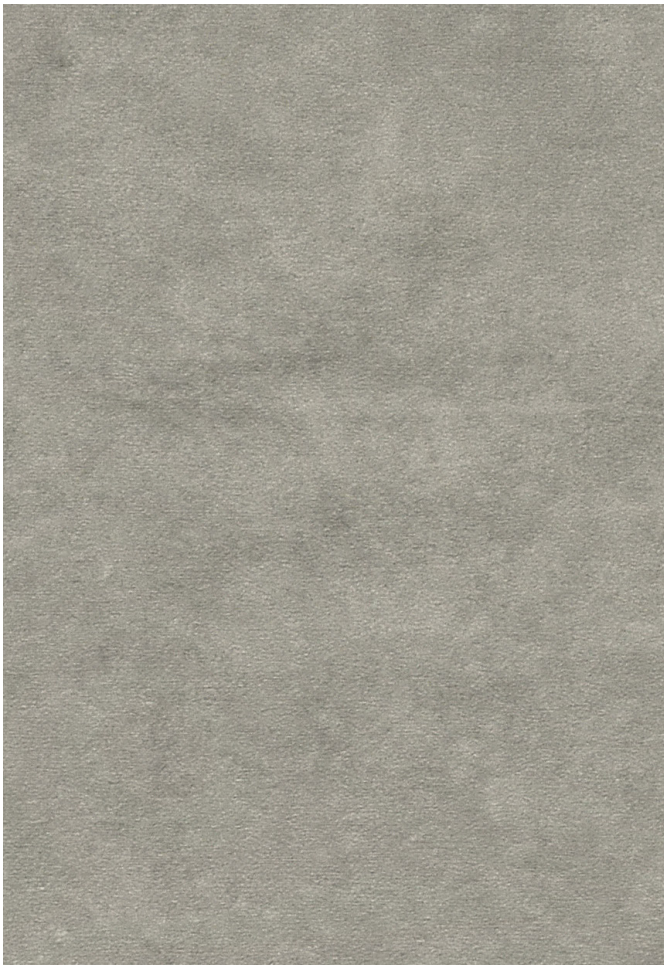
1014 FENNEL SEED

 12" x 24"



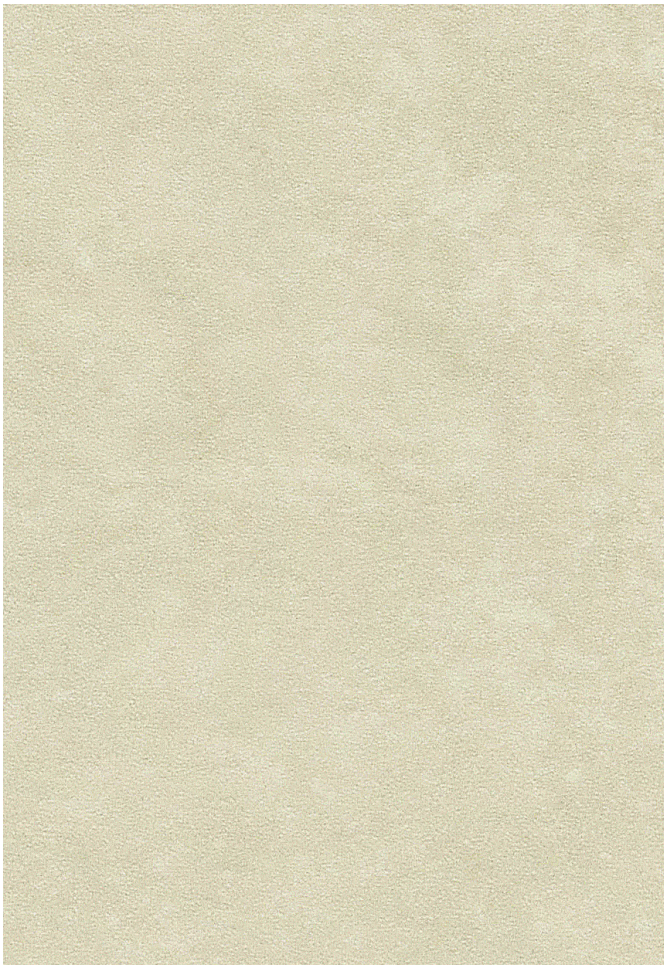
1015 SESAME

 12" x 24"



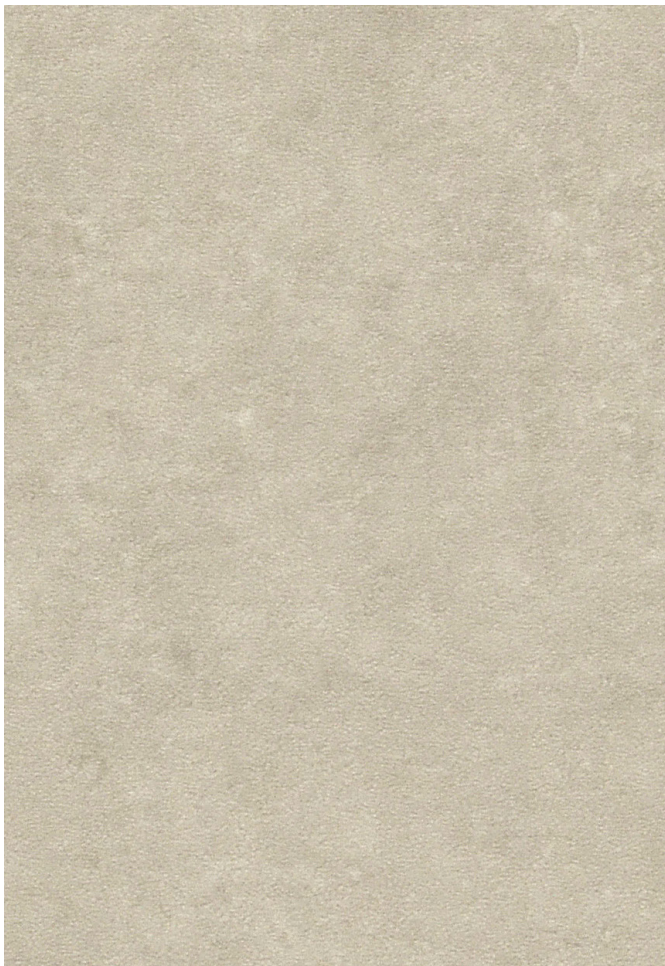
1016 CLOUDED THYME

 12" x 24"



1010 FENUGREEK

 12" x 24"



1011 CORIANDER

 12" x 24"



1012 CLOVE

 12" x 24"



1013 NUTMEG

 12" x 24"



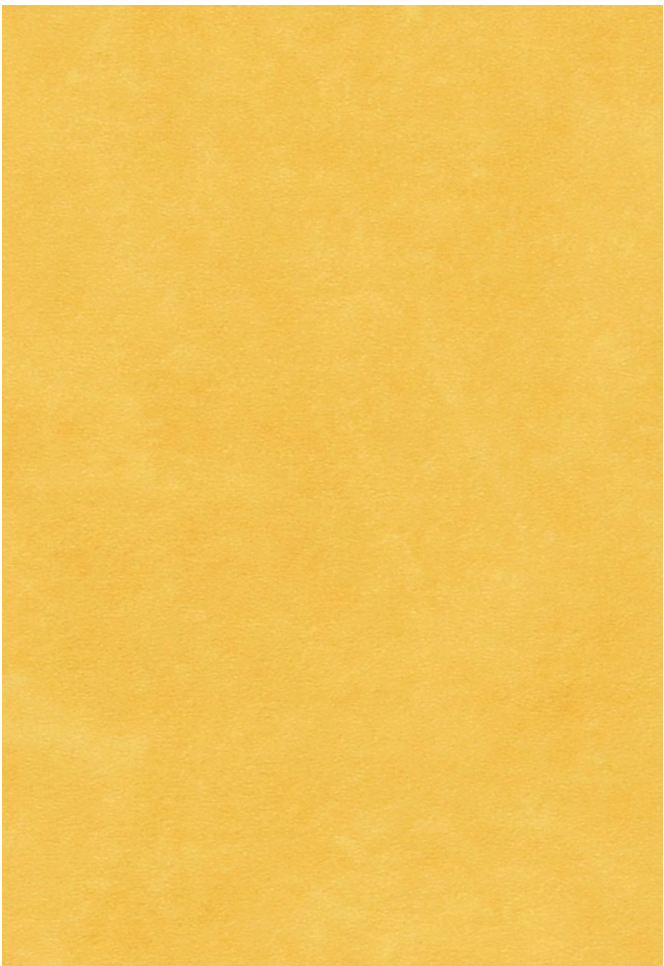
1008 TONED THISTLE

 12" x 24"




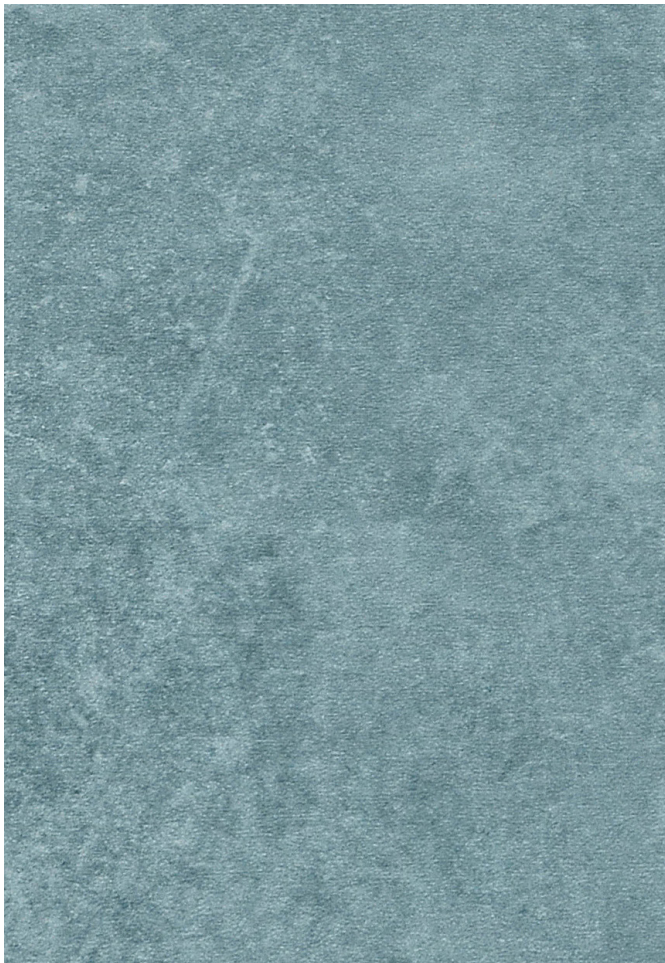
1007 CARDAMOM

 12" x 24"



1001 SAFFRON

 12" x 24"



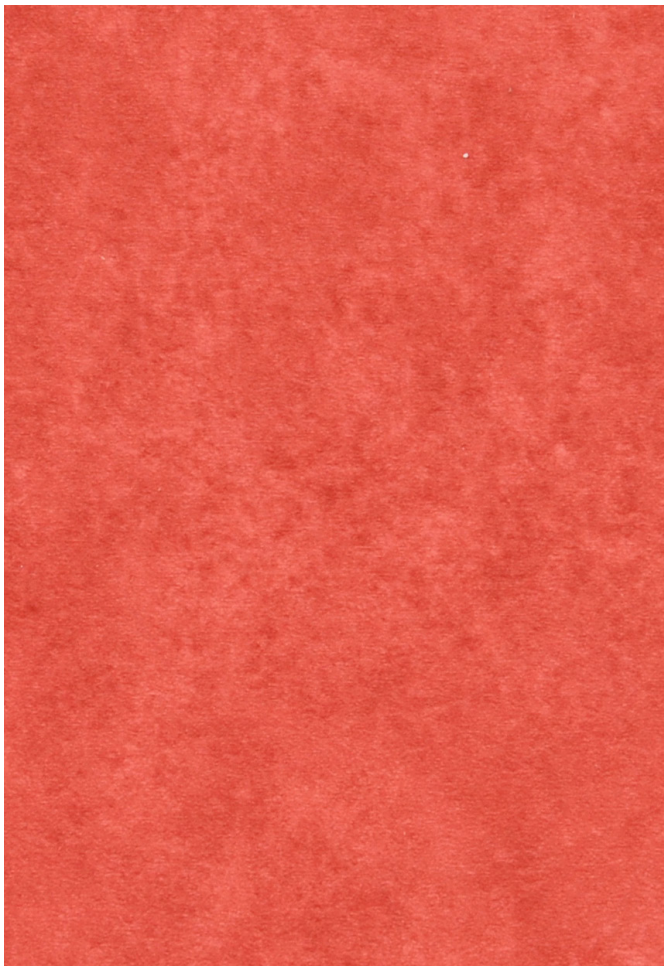
1009 MUTED CORNFLOWER

 12" x 24"



1002 CINNAMON

 12" x 24"



1003 SMOKED PAPRIKA

 12" x 24"



1005 NIGELLA

 12" x 24"



1004 SUMAC

 12" x 24"



1006 JUNIPER

 12" x 24"



GERFLOR USA
877.437.3567
samples@gerflorusa.com
orders@gerflorusa.com

Made in USA

gerflorusa.com

DESCRIPTION	STANDARDS	REQUIREMENTS	CREATION GUIDEPOINT
PRODUCT DESCRIPTION			
Reference Specification*	ASTM F1700	–	Class III Type B
Construction	–	–	Luxury Vinyl Tile
Surface Treatment/Maintenance	–	–	PUR+ Matte
Gauge Total Thickness	ASTM F386	–	0.1" (2.5 mm)
Wearlayer Thickness	ASTM F410	–	20 mil (0.5 mm)
Backing	ASTM F1303	–	100% Recycled Material
Tile Size	–	–	12" x 24"
PERFORMANCE			
Static Load Resistance	ASTM F970	≤ 0.005"	Meets Requirements
Dimensional Stability	ASTM F2199	< 0.02"	Meets Requirements
Dimensional Squareness	ASTM F2055	-	Meets Requirements
Indentation - Residual	ASTM 1914	≤ -8%	Meets Requirements
Flexibility	ASTM F137	> 1"	Meets Requirements
Chemical & Stain Resistance	ASTM F925	–	Meets Requirements
Resistance to Heat	ASTM F1514	–	Meets Requirements
Resistance to Light	ASTM F1515	–	Meets Requirements
Coefficient of Friction	ASTM D2047	–	0.65 (leather) / 0.82 (neolite)
Impact Insulation (IIC)	ASTM E989 (ASTM E492)	–	39 dB
Fire Rating - Flame Spread	ASTM E648	Class 1	Meets Requirements
Smoke Density (Flaming and Non-Flaming)	ASTM E662	–	Meets Requirements
ENVIRONMENT HEALTH & SAFETY			
Manufacturing Plant Certifications	ISO 9001	–	Meets Requirements
Environmental Product Declaration (EPD)	LEED v4.1 MR BPDO	–	Product-Specific Type III
Material Ingredients: Health Product Declaration (HPD)	LEED v4.1 MR BPDO	–	Self-Declared
Material Ingredients: REACH Optimization	LEED v4.1 MR BPDO	–	100% REACH Compliant
Sourcing of Raw Material: Recycled Content	LEED v4.1 MR BPDO	–	30% Average Pre-Consumer Content
Indoor Air Quality / Low Emitting Materials	LEED v4.1 EQc2	–	FloorScore® Certified
Production Waste	LEED v4.1 EQc3	–	100% Manufacturing Waste Recycled
TVOC after 28 days	ISO 16000-6	–	≤10µg/m3
WARRANTY	10-year limited manufacturer warranty when installed in accordance with Gerflor's installation instructions on gerflorusa.com		

*Rubber leaves indelible stains on synthetic floorings: do not use mats with rubber backing and replace tubular furniture feet with those made of PVC or polyamide. Place mats of sufficient length at entrances to reduce outside sources of dirt.

** The best defense against the spread of infections is the implementation of an effective cleaning method.

For the most updated documentation and specification content, please visit gerflorusa.com.



GENA0136 - CREATION GUIDEPOINT USA BINDER 2023